

PROJECT PROFILE: 4570 – South Western Railway 5G MMWave Build.

PROJECT SPECIFICATIONS

Status: **Completed**
Started: August 2021
Completed: August 2024
Project Duration: 3 Years
Location: Earlsfield to Basingstoke
SVR Disciplines: Veg clear, Cable pulling, 5G masts, Safe walking route, Survey, Retaining walls, Piling.



ABOUT THE PROJECT

The scope of this project is the provision of 58 off new trackside 5G Antennas and their associated ancillary equipment over approx. 70Km of Railway, starting around Earlsfield Station and go through to Basingstoke Station. All the works are along the BML1 line – from 5m 65ch to 47m 23ch

PROJECT OVERVIEW

Works undertaken by Sunville Rail included;

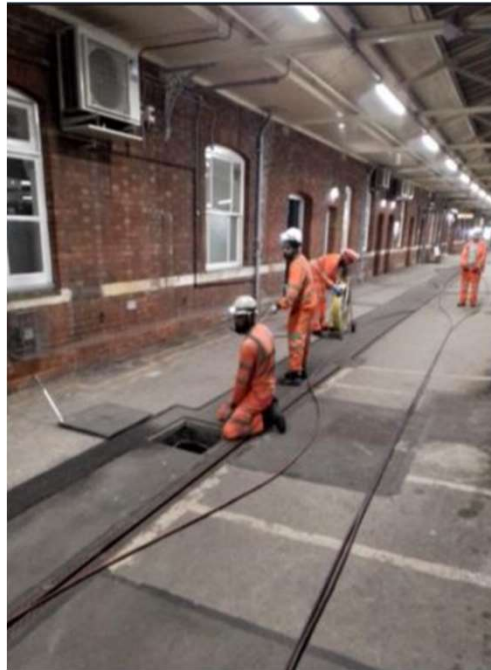
- Installation of 58 piled 5G connectivity masts approx. 1km apart
- Retaining wall structures around 32 piled masts
- Safe access GRP handrail
- Safe access GRP grating
- Bank reinstatement
- Type 1 walk route install
- Vegetation clear for safe access
- 2300m TTS90 installation
- 50m TTS200 installation
- 579m Arco on piled posts
- Safe delivery of materials by hand, RRV's and rail trolleys.
- 60+Km of cable pulled
- Installation of cabinet bases
- Provide transient welfare facilities
- Provide cable trailer and operatives
- Environmentally dispose of onsite waste



PROJECT PROFILE: 4570 – South Western Railway 5G MMWave Build.



PROJECT PROFILE: 4570 – South Western Railway 5G MMWave Build.



For more information please contact:
Paul Hayes
 Managing Director
 Sunville Rail Limited
paul.hayes@sunvillerrail.co.uk